



CORPORATE HIRE AT
RATHFINNY WINE ESTATE

CONTENTS

3 – About Rathfinny

4 – Our Unique Venues

5 – The Flint Barns

6 – The Flint Barns Snug

7 – The Flint Barns Snug – Meeting Hire

8 – The Flint Barns – Exclusive Use Hire

9 - The Flint Barns in Pictures

10 – The Tasting Room

11 – The Tasting Room – Meeting Hire

12 – The Tasting Room in Pictures

13 – Capacities

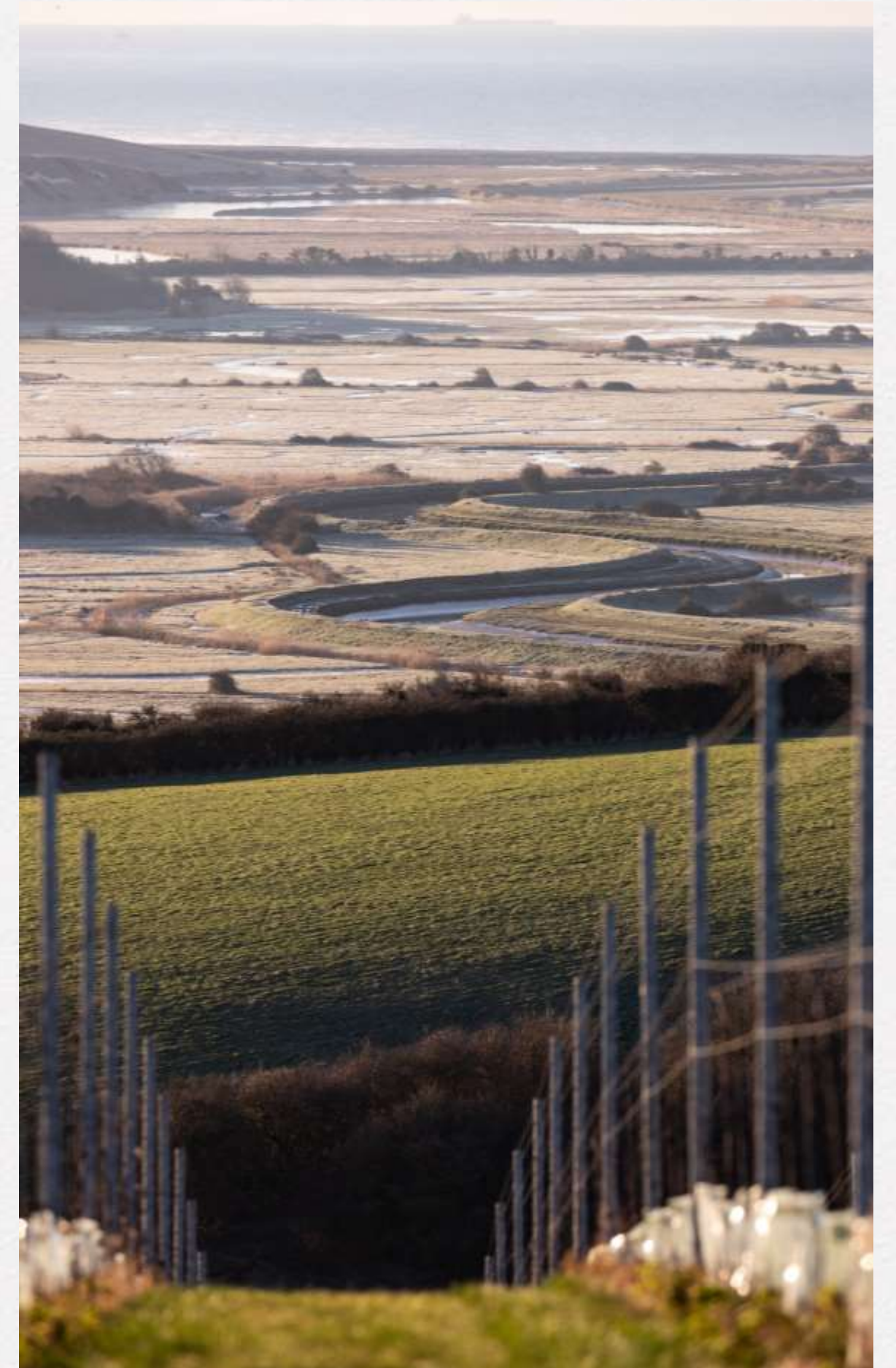
14 – Food & Beverage

15 – Food & Beverage – Our Restaurants

16 – Food & Beverage – Meetings

17 – 20 – Talks, Tours and Tastings

18 – Location and Contact



Inspiring memorable experiences

RATHFINNY WINE ESTATE, SITUATED IN THE SOUTH DOWNS NATIONAL PARK IN SUSSEX, ONE OF ENGLAND'S MOST EXCEPTIONAL NATURAL LANDSCAPES.

Founded in 2010 by husband and wife, Mark and Sarah Driver, Rathfinny is located in the South Downs National Park, an area of outstanding natural beauty in Southern England. It occupies the main part of the Cradle Valley, on a south-facing slope, just three miles from the sea and the iconic Seven Sisters cliffs.

Today, Rathfinny Estate comprises of 93 hectares of vines, made up of the principle sparkling wine grapes: Pinot Noir, Chardonnay and Pinot Meunier. We are proud to be a family-owned, grower-producer with B Corp certification.

We craft low-intervention traditional method, vintage sparkling wines with PDO status that are a true expression of our single-estate terroir.



DIVIDED ACROSS OUR SECLUDED WINE ESTATE, OUR EXCLUSIVE VENUES RANGE FROM THE SENSITIVELY RESTORED **FLINT BARN**S FARMHOUSE TO OUR INTIMATE **TASTING ROOM**, WITH PANORAMIC VIEWS OF THE VINEYARD.

Nestled in the Cradle Valley, where the coast meets countryside

THE FLINT BARNs



The Flint Barns

SNUG

The Snug is a flexible meeting and events space located in our Flint Barns. The building has been sympathetically restored with reclaimed oak structures and flooring. Contemporary glass roof windows welcome natural light into the space and vaulted ceilings and exposed brickwork show off the impressive masonry.

The Snug can be hired out as a meeting room or for an event for a half or full day, subject to availability.





Inspiring business

HIRING THE SNUG FOR A MEETING

Rathfinny is the perfect venue for the business visitor, providing a beautiful and tranquil setting for a senior management workshop or an inspirational space in which to host a company meeting. Our multi-purpose venues also provide the perfect place to entertain clients with fine wine and food.

Rates:

Half day: 9am - 1pm or 1pm – 5pm - £425

Full day: 9am – 5.30pm - £625

What comes as standard:

- Tea & coffee.
- TV screen and/or flipcharts.
- Rathfinny notepads, pens and pencils.
- A person on hand to assist when required.

What is available to add to your experience:

- Food and beverages available - working breakfast and lunch. Dinner in our Flint Barns Dining Room and lunch in our Tasting Room restaurant.
- Talk and wine tasting or a tour and wine tasting.
- Overnight stay at the Flint Barns (subject to availability).

Please refer to the Contents page to be guided on where to find more information about these additional experiences.

The Flint Barns

CORPORATE EXCLUSIVE USE HIRE

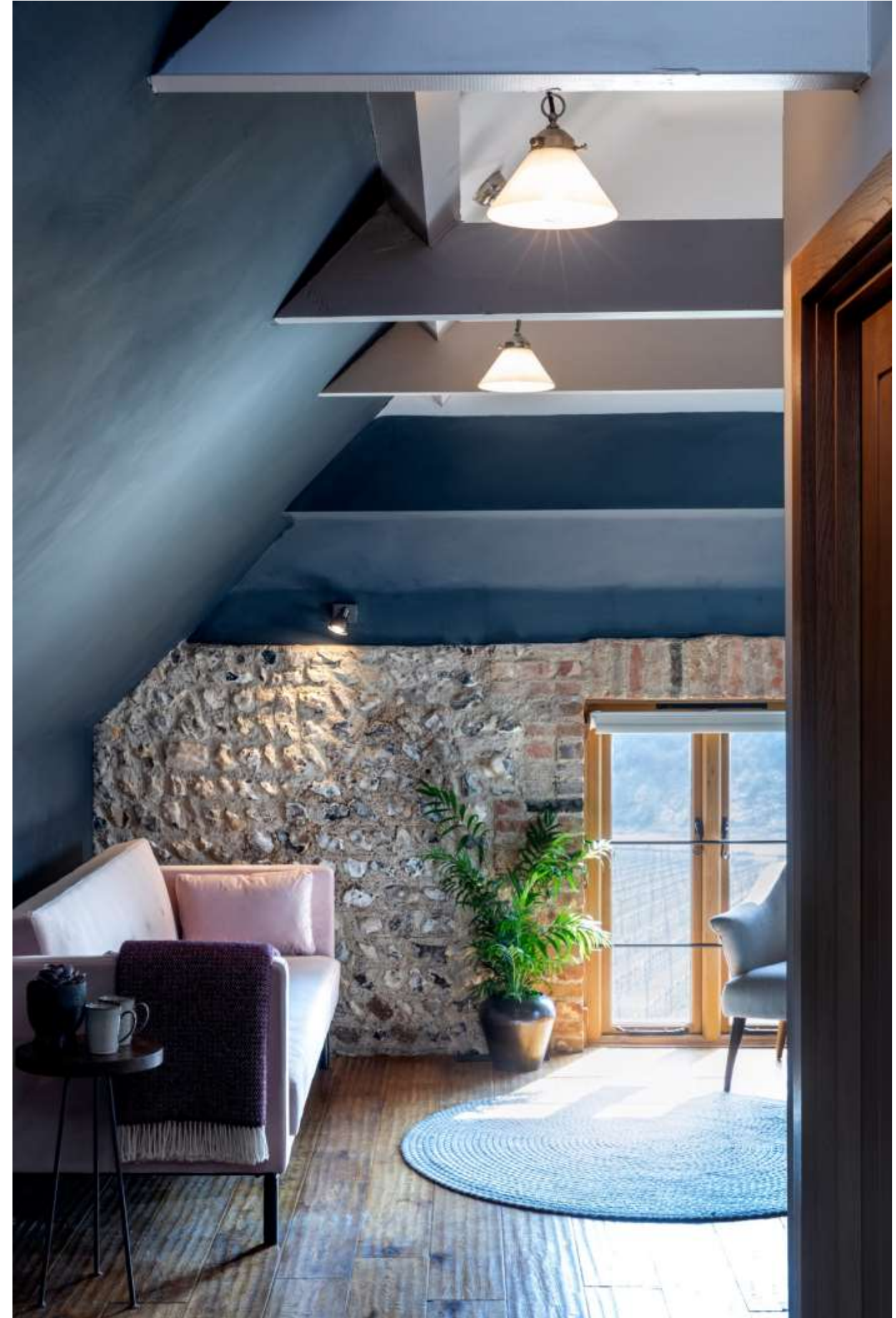
With the labour of family love and keen attention to design, the interiors have been transformed with understated sophistication. Modest yet comfy, the Flint Barns houses 10 en-suite bedrooms, offering beautifully appointed “home away from home” accommodation.

The Flint Barns at Rathfinny are perfectly situated to keep your team occupied from dawn until dusk and beyond! Throughout your stay you are welcome to use all the facilities. The spacious snug, filled with books, games and activities, is adjacent to the beautiful, large dining area. The lounge is cosy for the winter months and the courtyard provides a beautiful place to relax in the summer.

The Flint Barns is available to hire on an exclusive use basis for a private meeting away or event. Price is £3,600 per night for a maximum of 20 guests. This includes bed and breakfast and access to all areas for meetings and hosting.

Food and beverages can be tailored to your visits, please see our food and beverage page (15-17) for more information.





Nestled in the heart of the Vineyard

TASTING ROOM



The Tasting Room

EXCLUSIVE USE HIRE FOR A MEETING

Located within our award-winning Winery, with panoramic views of the Vineyard and South Downs, our Tasting Room venue is perfect for small and intimate meetings.

Rates: Full day hire for maximum 25 people, 8am to 6pm - £3,000.

What comes as standard:

- Tea & coffee.
- TV screen and/or flipcharts.
- Rathfinny notepads, pens and pencils.
- A person on hand to assist when required.

What is available to add to your experience:

- Food and beverages available - working breakfast and lunch. Dinner in our Flint Barns Dining Room or a three-course Tasting Room lunch.
- Talk and wine tasting or a tour and wine tasting.
- Overnight stay at the Flint Barns (subject to availability).

Please refer to the Contents page to be guided on where to find more information about these additional experiences.





CAPACITIES

Meeting and event spaces can be adapted for a variety of business meetings and social events, from think tanks to conferences, private dinners to Christmas parties.

THE FLINT BARNS SNUG

DIMENSIONS	BOARDROOM	THEATRE	DINING ROOM	RECEPTION
4.7m x 5.2m	12	12	20	-

THE TASTING ROOM

DIMENSIONS	BOARDROOM	THEATRE	DINING ROOM	RECEPTION
20m x 4m	25	25	30	25

THE FLINT BARNS BEDROOMS

BEDROOM	ROOM STYLE	FLOOR	CAPACITY
Camp Hill	Signature Double	Ground	Two
Dukes Green*	Deluxe King	Ground	Two
France Bottom	Single	First	One
Frog Firle	Cosy Double	First	Two
Pinchemdown*	Deluxe King	First	Two
Cuckmere	Signature Double	First	Two
Cowstall*	Deluxe King	First	Two
The Rails	Cosy Double	Second	Two
Hobbs Hawth	Signature Double with a single bed	Second	Three
Cradle Valley*	Super Deluxe King with a single bed	Second	Four

** Additional trestle bed available*

FOOD & BEVERAGE

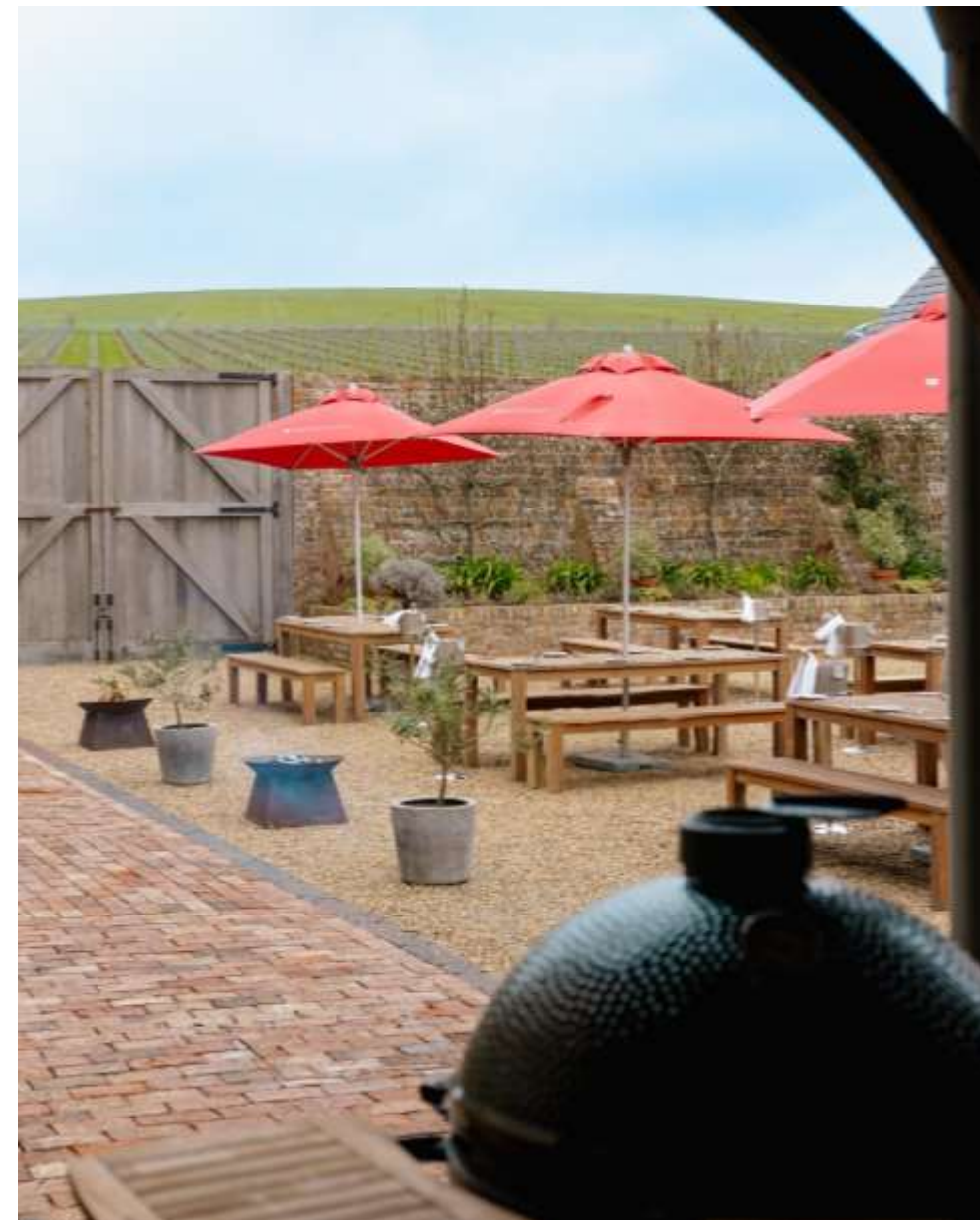
We pride ourselves on delivering a high-quality food offer across the Estate, headed up by our Executive Head Chef Chris Bailey.



THE FLINT BARN'S DINING ROOM

Our Flint Barns Dining Room restaurant offers an approachable blend of modern classics, serving seasonal, produce-led dishes in a relaxed atmosphere. Dinner available on request, subject to availability.

Sample menus available on request.



THE TASTING ROOM

Our Michelin-recommended Winery restaurant, overlooking the Vineyard and South Downs, serves a menu of modern British cuisine including 3 course lunches and tasting menus.

Sample menus available on request.

FOOD & BEVERAGES FOR MEETINGS

If you are joining us at either venue for a meeting, we can organise a working breakfast and working lunch. Please see our sample menus below. We can cater to all dietary requirements.

WORKING BREAKFAST

Croissants, baked in house

Sourdough toast with a selection of jams and preserves

Fresh orange juice

Coffee and tea

Seasonal fruit bowl

£25 PER PERSON

WORKING LUNCH

Luxury sandwich selection

Kettle chips

Seasonal fruit bowl

£30 PER PERSON

VINEYARD LUNCH

Artisan cheeses and chutney, sourdough crackers

Charcuterie board and pickles

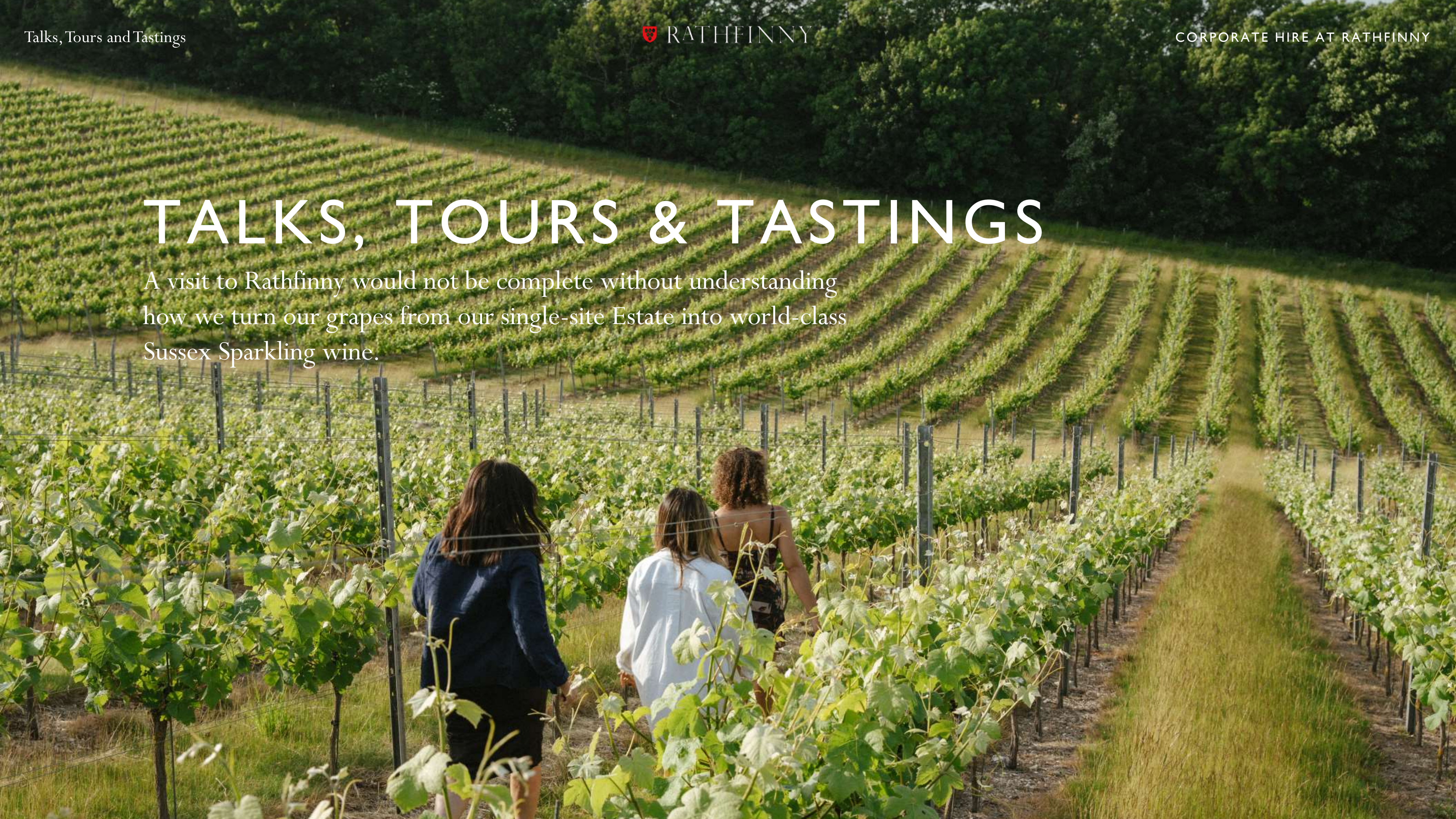
Kettle chips, Gordal olives, Valencian almonds

Baguettes and salted butter

£35 PER PERSON

TALKS, TOURS & TASTINGS

A visit to Rathfinny would not be complete without understanding how we turn our grapes from our single-site Estate into world-class Sussex Sparkling wine.





Inspire your guests

TALK, TOUR & TASTING

TALK & TASTING

To break up your private meeting or event, why not book a talk and tasting with one of our expert guides? This consists of an introduction to Rathfinny Wine Estate followed by a tasting of four of our Rathfinny Sussex wines.

1 hour in total | £30 per person

TOUR & TASTING

Depending on the time of year, our expert tour guides will take you on either a walk through the vines or guide you through our RIBA nominated Winery and Bottling buildings to learn the processes and care involved in making high quality wines, concluding with a tasting of our Sussex Sparkling wines.

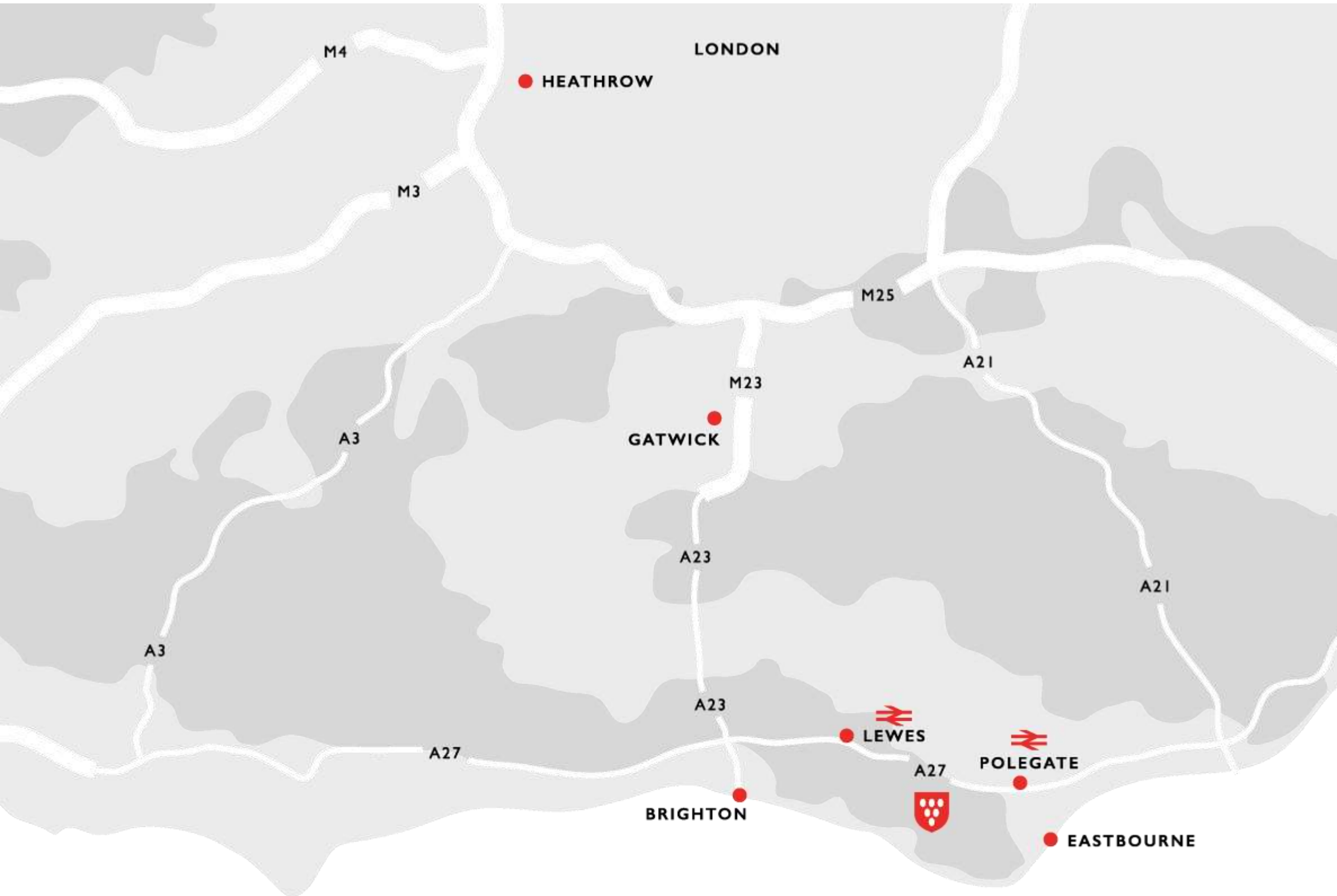
1 hour 45 minutes in total | £40 per person



“Sussex might be an emerging wine region on the global stage, but my mini tour convinced me that there is enough world-class wine, food, accommodation and scenery to put it high on the must-do-list of any gourmet traveller.”

THE SUNDAY TELEGRAPH





Rathfinny is approximately 90 minutes from London, and within easy access of the M23, local train stations and major airports.

FOR MORE INFORMATION CONTACT

events@rathfinnyestate.com

+44 (0)1323 87 00 22

Rathfinny Wine Estate, Alfriston, East Sussex, BN26 5TU, UK

@rathfinnyestate | rathfinnyestate.com

“...Thank you so much for the support and brilliant organisation....the venue was delightful, the food delicious and the activities fantastic too.”

BAILEY AND FRENCH CONSULTANTS